

STANDARD DEPARTURE CHART-INSTRUMENT

RJEC / ASAHIKAWA

SID

KAGRA FOUR DEPARTURE

RWY16 : Climb RWY HDG to 1600FT, turn left,...

RWY34 : Climb via AWE R337 to 2.3DME, turn right,...

...direct to AWE VOR/DME, via AWE R283 to KAGRA.

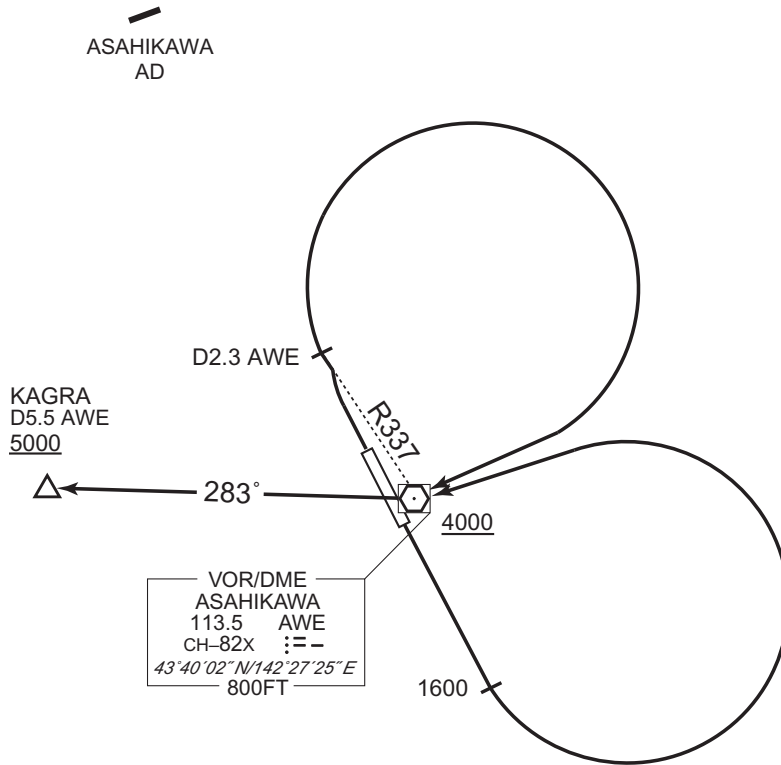
Cross AWE VOR/DME at or above 4000FT, cross KAGRA at or above 5000FT.

Note RWY16 : 5.3% climb gradient required up to 1600FT.

OBST ALT 1247FT located at 2.0NM 146° FM end of RWY16.

RWY34 : 5.0% climb gradient required up to 1000FT.

OBST ALT 696FT located at 1.4NM 021° FM end of RWY34.



CHANGE : Description of PROC name.