

STANDARD DEPARTURE CHART-INSTRUMENT

RJEB / MONBETSU

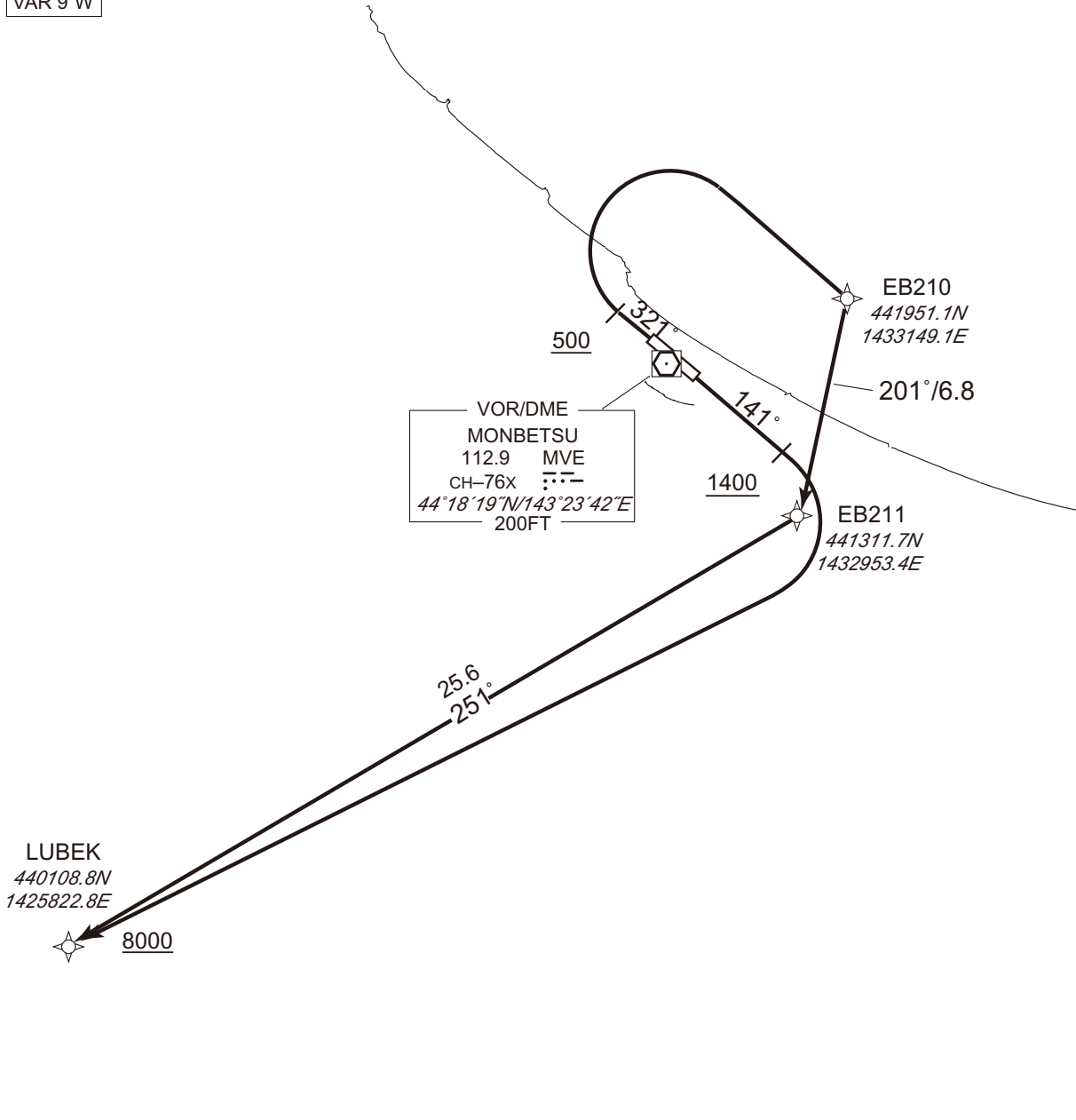
RNAV SID

LUBEK ONE DEPARTURE

RNP1

Note GNSS required.

VAR 9°W



CHANGE : Navigation Specification(Basic RNP1 → RNP1).

RWY14 : Climb on HDG141° at or above 1400FT, turn right direct to LUBEK at or above 8000FT.
 RWY32 : Climb on HDG321° at or above 500FT, turn right direct to EB210, to EB211, to LUBEK at or above 8000FT.

Note RWY14 : 5.0% climb gradient required up to 1400FT.
 OBST ALT 1182FT located at 2.9NM 172° FM end of RWY14.

RWY32 : 5.0% climb gradient required up to 700FT.
 OBST ALT 657FT located at 3.4NM 318° FM end of RWY32.

STANDARD DEPARTURE CHART-INSTRUMENT

RJEB / MONBETSU

RNAV SID

LUBEK ONE DEPARTURE

RWY14

Serial Number	Path Descriptor	Waypoint Identifier	Fly Over	Course °M(°T)	Magnetic Variation	Distance (NM)	Turn Direction	Altitude (FT)	Speed (KIAS)	Vertical Angle	Navigation Specification
001	VA	-	-	141 (132.0)	-9.2	-	-	+1400	-	-	RNP1
002	DF	LUBEK	-	-	-9.2	-	R	+8000	-	-	RNP1

RWY32

Serial Number	Path Descriptor	Waypoint Identifier	Fly Over	Course °M(°T)	Magnetic Variation	Distance (NM)	Turn Direction	Altitude (FT)	Speed (KIAS)	Vertical Angle	Navigation Specification
001	VA	-	-	321 (312.0)	-9.2	-	-	+500	-	-	RNP1
002	DF	EB210	-	-	-9.2	-	R	-	-	-	RNP1
003	TF	EB211	-	201 (191.7)	-9.2	6.8	-	-	-	-	RNP1
004	TF	LUBEK	-	251 (242.1)	-9.2	25.6	-	+8000	-	-	RNP1

CHANGE : Navigation Specification(Basic RNP1 → RNP1).