

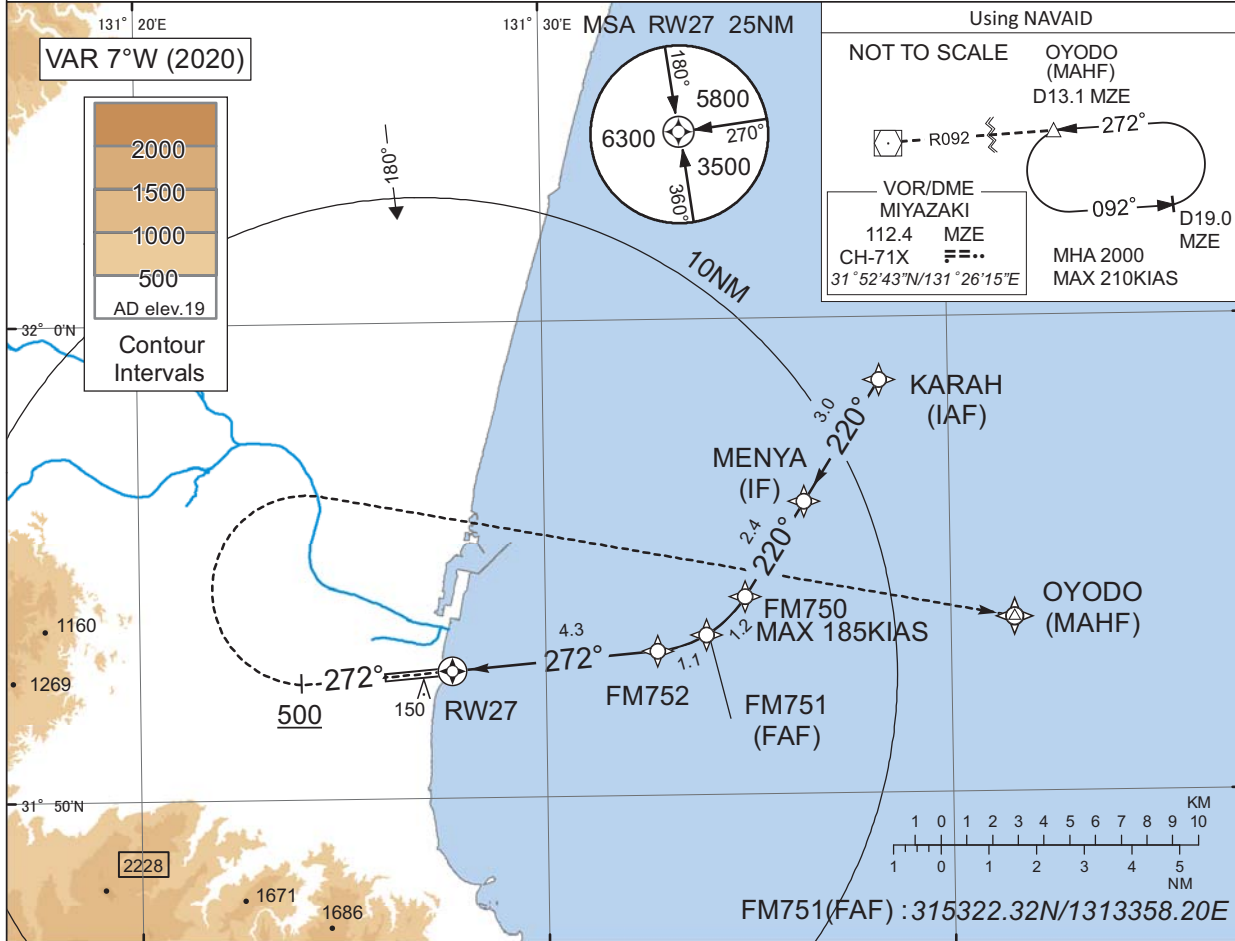
INSTRUMENT APPROACH CHART

RJFM / MIYAZAKI

RNP RWY27(AR)

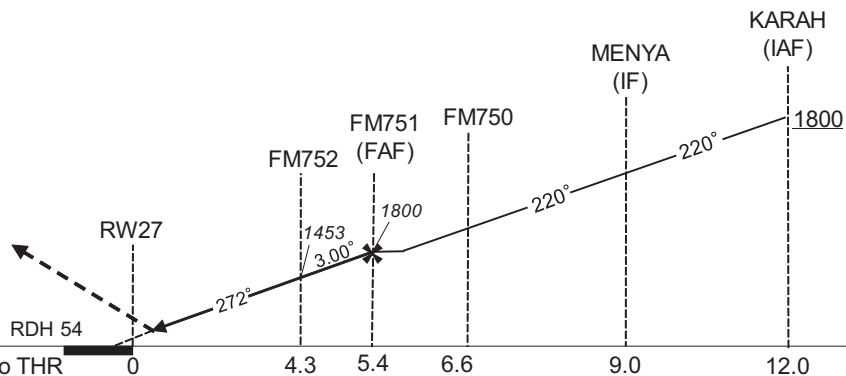
KAGOSHIMA APP 121.4 - 362.3 120.9 - 261.2	RNP AR RF required.	MIYAZAKI TOWER 118.3 - 126.2 123.6 - 261.2	RADAR AVBL ATIS 126.8
---	------------------------	--	--------------------------

For uncompensated Baro-VNAV systems, procedure not authorized below -5°C / above 45°C



MISSED APPROACH

From RW27 on track 272°, at or above 500FT turn right, direct to OYODO and hold at 2000FT. Contact KAGOSHIMA APP.



CHANGE : PROC renamed. Requirement for RNP.

Authorization Required